

On behalf of everyone, the Technical Team warmly Welcomes you to the Tacchi-Morris Arts Centre (TMAC). This pack includes the following details:

- Welcome and General Safety Notices
- Technical Department Contact details
- Technical Specifications and Equipment list (including contras)
- Square one lighting rig (pdf)
- Blank lighting plan (pdf)
- Blank stage plan (pdf)
- Theatre images

**Location:**

The scene dock is located at this What3Words Location:

///outcasts.warp.mango

**Safety Notices:**

Please take a moment to read the safety notices backstage regarding the following:

Fire Safety  
Risk Assessments  
Child Protection Policy

If you require any of these in advance, please request from [kevin@tacchi-morris.com](mailto:kevin@tacchi-morris.com)

**Smoking & Vaping:**

This is a non smoking and vaping site, if you wish to smoke or vape, we respectfully ask that you do so away from the main car park gates.

**Arrival & Security:**

All company members MUST sign in upon arrival via the Stage Door. Signing sheet is next to the stage door. Only company members are permitted backstage, no guests please. We advise you to not keep valuables in the dressing rooms. Items can be locked away by request during your stay. Stage door will be locked to exit only after arrival. Should you require constant use for Hires/Community shows - visiting companies and hirers will need to provide a person to cover this role.

**Wifi:**

There is Wifi available throughout the building, please ask the tech team for the password or see the reverse of the Dressing Room Doors

**Food And Drink:**

Food and drink are not permitted in the auditorium, however, can be consumed backstage in the green room and dressing rooms. Please make use of the fridge, kettle and microwave facilities in dressing room 2 (the large room). There is a Co-Op (Open 6am - 11pm) across the road serving hot and cold food, Costa Express etc.

## **Local Amenities:**

We are located around 2 miles from Taunton Town Centre. It is walkable via the Canal path in approximately 40mins and boasts the usual array of supermarkets, shops and attractions.

In the immediate area by the Theatre there is a local public house serving food and drink 7 days a week, walkable in 5mins.

The Merry Monk - <https://themerrymonk.co.uk/>

You are also only 5mins drive from the main Taunton M5 junction (J25) which houses a bowling complex, cinema, supermarket, fast food outlets and coffee shops. A range of hotels are also situated within 10mins drive of the venue.

## **Transport:**

We are on the local bus route (stop located 2mins from the venue) for services 21/21A into Taunton: <https://www.firstbus.co.uk/somerset>

We are 1.5miles from Taunton railway station and less than a mile from J25 of the M5 and the A303.

Taxi services can be found: <http://a1acetaxis.co.uk/>

## **Backstage relay:**

There is backstage relay for Audio and Video in Dressing Rooms 1,2,3 and the music suite.

## **Technical Team Hours:**

House crew will take a 30min lunch at approx 13:30 and a 30min Tea at 18:30. If more than one member of staff are on, we are happy to stagger this, but breaks must be adhered to.

## **Technical Crew & Contact details:**

E: [technical@tacchi-morris.com](mailto:technical@tacchi-morris.com)

T: 01823 414142

## **Technical Specifications & Additional Information**

- Auditorium:** 247 seats (230 excluding House seats)  
Sound desk in Auditorium takes out 8-12 seats (Centre)  
Sound desk to left of Control room takes out 3 seats  
Follow spot positions take out 3 house seats each (2 x positions SL/SR) but can be accommodated in the tech box providing sound position is the auditorium.
- Accommodation:** 3 x Dressing Rooms for a total of 20 people (inc. showers, WC)  
Music suite for additional 30 x people (by prior arrangement subject to use)  
All dressing rooms / music suite have audio/video show relay.
- Performance area:** **Max** 10m deep x 10m wide black Harlequin Dance floor  
Grid height 6.6m

**Stage:** No rake, semi sprung floor, full set of black wool drapes to form black box plus additional legs if required.

**Get-in:** Via scene dock at stage level - the easiest get in on your tour!  
No parking restrictions.  
3 x Spaces for parking for Van or cars. Articulated trailers by prior request.

**Sockets/Power:** Various 13A, 2 x 32A, 15A, CAT5, ATL and technical tie lines in all 4 corners  
1 x Additional 63a3P supply (socket only) - used for lighting currently -  
additional 2 x 32A single phases supplies can be accessed by a company  
supplied 10m 32A lead.

### **House Sound:**

**Must be reset to house settings following performance.**

6 x RCF speakers (4 for FOH, 2 for FOH Delay)  
2 x DB Opera 400w Actives (for DS Fill)  
2 x Mackie Thump 1300w Active Subs  
1 x Speaker Management system to control above - simple L+R plug in for visiting companies.  
1 x Allen and Heath QU32 Digital Mixer + 2 x 16/8 Stage Boxes  
3 x 400w Active monitors\*  
Assorted microphones (inc. vocal, ambient, lectern, instrumental - please detail requirements)  
Appropriate mic stands and leads  
QLab Pro Audio & Video License  
4 x Ch70 VHF Radio mics (hand held/lapel), for vocal reinforcement, announcements etc  
2 x Sennhesier XSW hand Held Ch38 radio mics

### **House Video:**

1 x Sony VPL Laser WUXGA projector (6000 Lumens) Rigged in Tech box c/w VGA, HDMI to DSR  
1 x Powered Screen for Projection FOT (rigged between LX2/3)  
1 x White Cyclorama for projection upstage of LX6  
1 x Windows Laptop for PowerPoint  
1 x Mac Mini 16GB Ram / 3GHZ / 256GB Flash with QLab Pro Audio & Video

### **House Stage Effects:**

Unique 2.1 Haze Machine  
2 x Fog Fury ADJ Vertical LED Smoke effects

### **House Lighting:**

We operate a flexible square one rig (SQ1). This means our SQ1 rig is used for all shows, with additional lanterns added on occasions when required for pre-rigs. Any significant alterations to the rig must be reset upon get out unless part of an agreed pre-rig.

Our SQ1 rig will always cater for a full LED colour cover across the stage; A full warm and cold wash including pipe ends; 2 x pairs of gobos; 2 x pairs of booms minimum with 2 x LED pars on each; Cyc and Tab warmers; 9 x moving head spots.

Our lantern stock comprises of the following units at the time of print:

**Profiles:**

10 x Strand SL 15/32 600w  
4 x Strand SL 23/50 600w

**Fresnel:**

21 x Harmony/Cantata 1200w

**PC:**

5 x Harmony/Cantata 1200w  
3 x Strand Quartet 650w

**Parcan:**

31 x PAR 64 (in CP62/CP95) 1000w

**Other:**

35 x Visage RGBWA+UV 046.1 Parcans (100w)  
4 x Visage RGBW 046.1 Parcans (100w)  
4 x Colordash Quad 12 LED Batten  
9 x Chauvet Intimidator 260 LED Profile moving light  
9 x Chauvet CYC FC1 (3 x on CYC, 3 x House TABS, 3 x Spare)  
4 x Varytec Hero 75w LED Fresnel moving light  
1 x Rotosphere HP  
1 x Unique 2.1 haze machine  
2 x ADJ Fog Fury Smoke jets

**Control:**

Zero 88 FLX Console  
84 x channels of dimming Beta pack Mk2s / Spice-Rack Dimmers  
165 x circuits inc houselights

Various lighting stands, booms, boom arms, telescopic, floor stands, iris', gobos.

Colour is LEE Filters as standard - house stock only, very limited.

**All pre-rigs must be sent detailing specific lighting bars and units for use.  
It is the visiting company's responsibility to state which bars, units and substitutions are  
required using this tech spec - please do call for any clarity!**

**Staging:**

14 x 8'x4' steel deck  
4 x 4'x4' steel deck  
40 x Blue fabric conference chairs  
50 x Plastic padded chairs  
2 x Small props tables  
7 x Collapsible trestle style tables if required

**Miscellaneous:**

8 x black wool serge legs (4 per side)  
2 x velour house tabs (purple)  
2 x black wool 'midway' tabs (to cut down depth of performance space to 10m Wide x 7m deep)  
White cyc cloth / Black back cloth for 'black box'  
16 x stage weights  
2 x Trilite Lecterns

1 x Tallescope for Rigging  
1 x Zarges Ladder (not to rig height)

**Stage Management:**

4 x Canford one-ear headsets/communication system  
Stage Management desk with Comms, Cue lights, video and audio relay.  
Pyro Stage Flash 2 Detonation kit with 4 Pods and cable - Risk Assessments to be agreed.

Please note equipment is subject to change or substitution in specification from time to time.  
Please if you have any ***specific requirements***, contact the team ASAP.

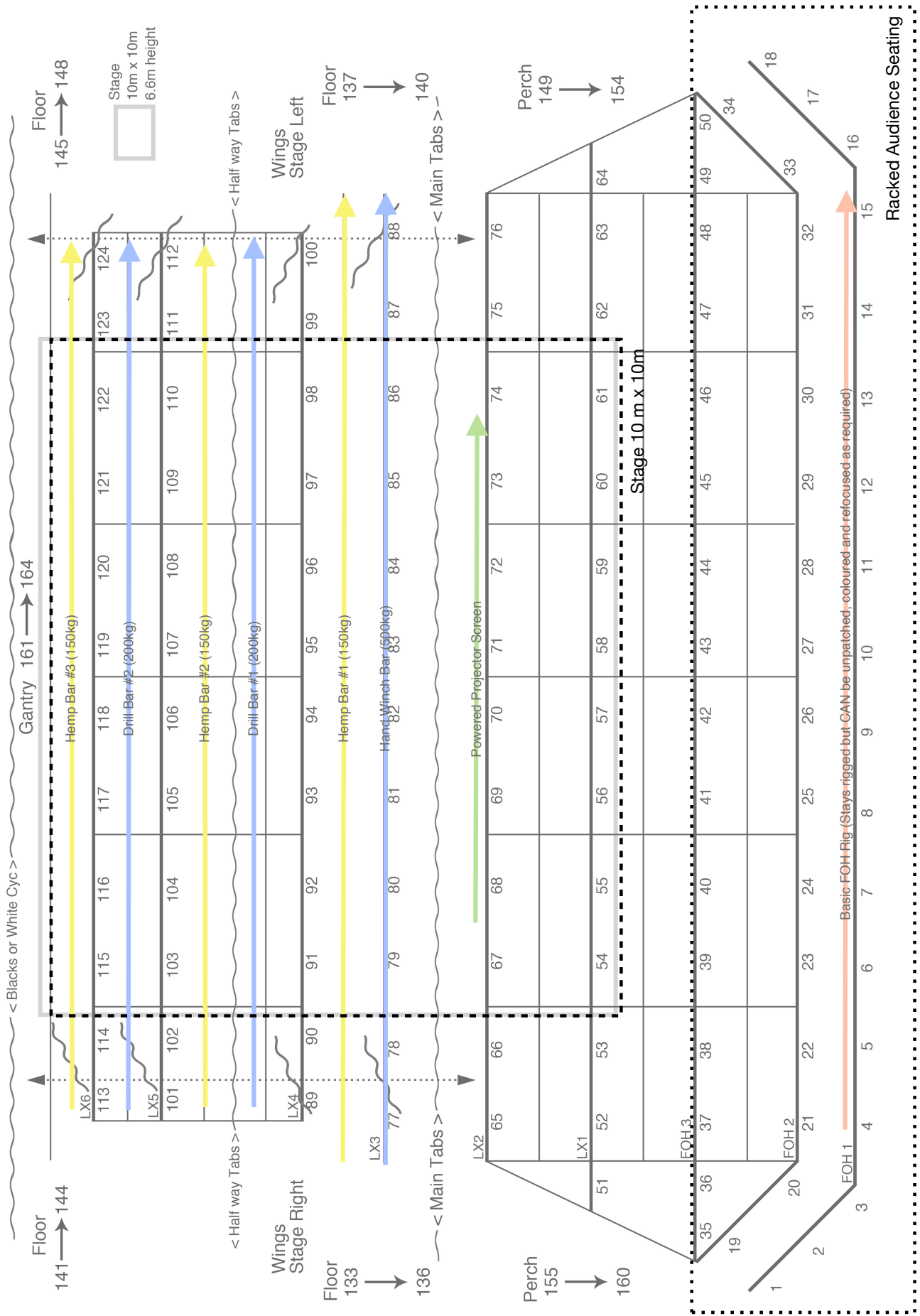
**Contra Equipment/Services:**

Item	Notes	Cost per show (ex VAT)
1 x Followspot	250w MSR Lamp, we have 2 x Spots*	£100.00
Up to 8 x ways of Radio Mic	Head/boom mic, Chord Brand* <a href="http://www.prolight.co.uk/ftp-in/MIC72A_Manual.pdf">http://www.prolight.co.uk/ftp-in/MIC72A_Manual.pdf</a>	£100.00
Additional Technician	Qualified Duty Technician / Sound / LX Tech (Minimum 4hr charge, hourly charge per hour thereafter)	£ POA
Use of upright Piano	Tuning and re-tuning charge	£170.00

For shows longer than 1 day, please speak to the Technical Manager to clarify charges.

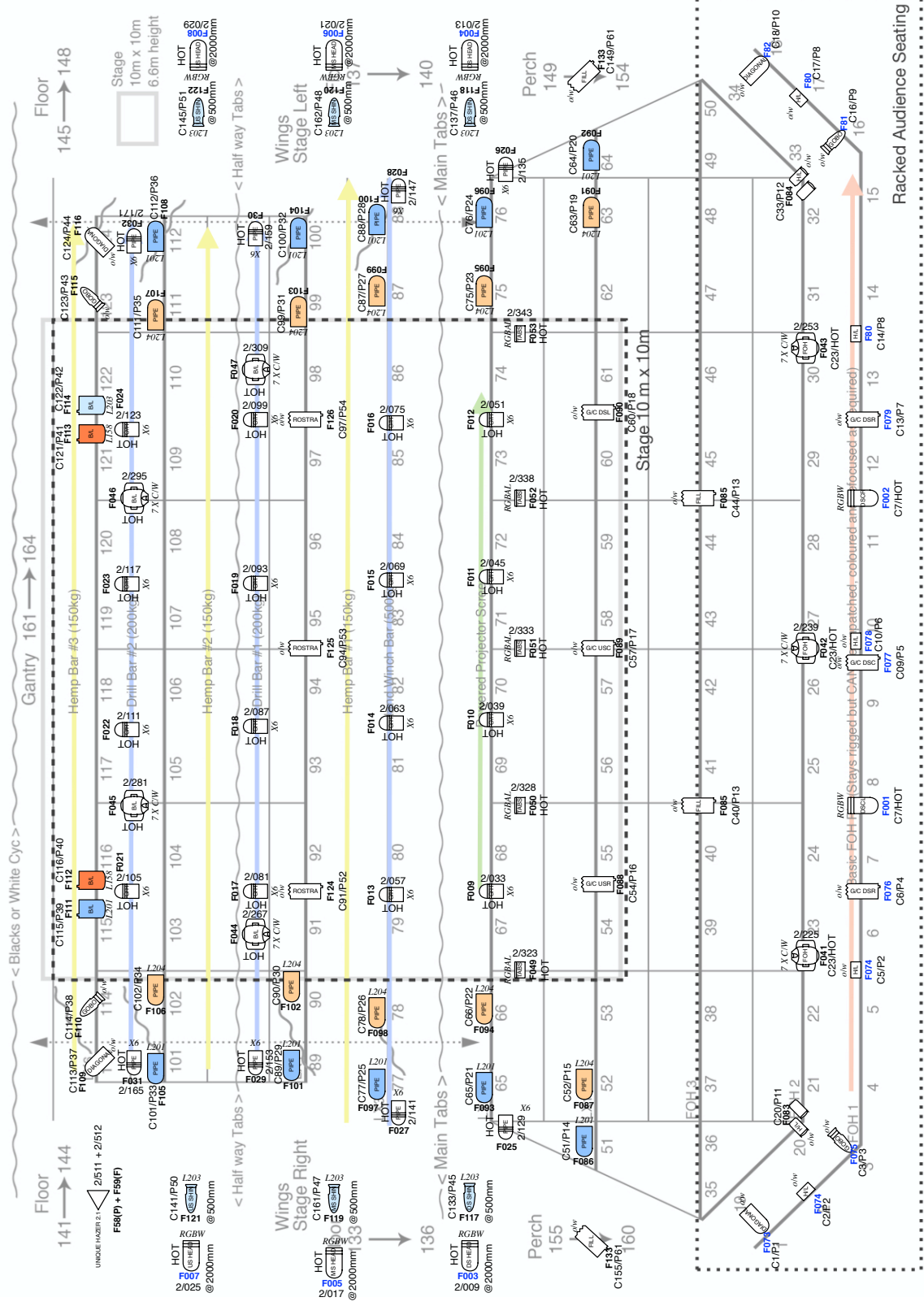
\* Does not include Followspot/Sound number 2 operator. We can endeavour to find a volunteer from our team, otherwise you will need to supply your own staff member, or use a Duty Technician if available.

For more information on technical specifications please contact:



Lanterns used on S01 Rig / Total Available :

6 / 12	Strand SL 16/30 Profile 650w
4 / 6	Strand SL 25/50 Profile 650w
13 / 22	Strand Cantata Fresnel 1200w
4 / 6	Strand Cantata PC 1200w
24 / 34	Par 64 CP62 1000w
24 / 32	Visage LED Par RGBWA+UV
7 / 7	Chauvet Intimidator 260 LED
0 / 4	Chauvet COLORDash Q12 LED
5 / 10	Strand Coda Flood 500w
4 / 7	Strand Quartet PC 650w
5 / 9	Chauvet FC Cyc 1A
6 / 6	Millek LED Par RGBW



2 X INTERNAL HOUSELIGHTS  
STEPSWALK  
F143 + F144  
C165 + 166 / P71 & 72

LED CYC, PAR & BATTENS NOT USED ON S01:

4 X CYC or UPLIGHTS	RGBAL	2/363	RGBAL	2/368
	RGBAL	2/358	RGBAL	2/368
	RGBAL	2/353	RGBAL	2/368
	RGBAL	2/348	RGBAL	2/368
	HOT	F056	HOT	F061
	HOT	F064	HOT	F061
	HOT	F067	HOT	F061
	HOT	F067	HOT	F061
8 X UPLIGHTS or TRILITES or EXTRA O.H	RGBAL	2/195	RGBAL	2/219
	RGBAL	2/189	RGBAL	2/213
	RGBAL	2/183	RGBAL	2/207
	RGBAL	2/177	RGBAL	2/201
	RGBAL	F037	RGBAL	F037
	RGBAL	F038	RGBAL	F038
	RGBAL	F039	RGBAL	F039
	RGBAL	F040	RGBAL	F040
	RGBAL	F041	RGBAL	F041
	RGBAL	F042	RGBAL	F042
	RGBAL	F043	RGBAL	F043
	RGBAL	F044	RGBAL	F044
	RGBAL	F045	RGBAL	F045
	RGBAL	F046	RGBAL	F046
	RGBAL	F047	RGBAL	F047
	RGBAL	F048	RGBAL	F048
	RGBAL	F049	RGBAL	F049
	RGBAL	F050	RGBAL	F050
	RGBAL	F051	RGBAL	F051
	RGBAL	F052	RGBAL	F052
	RGBAL	F053	RGBAL	F053
	RGBAL	F054	RGBAL	F054
	RGBAL	F055	RGBAL	F055
	RGBAL	F056	RGBAL	F056
	RGBAL	F057	RGBAL	F057
	RGBAL	F058	RGBAL	F058
	RGBAL	F059	RGBAL	F059
	RGBAL	F060	RGBAL	F060
	RGBAL	F061	RGBAL	F061
	RGBAL	F062	RGBAL	F062
	RGBAL	F063	RGBAL	F063
	RGBAL	F064	RGBAL	F064
	RGBAL	F065	RGBAL	F065
	RGBAL	F066	RGBAL	F066
	RGBAL	F067	RGBAL	F067
	RGBAL	F068	RGBAL	F068
	RGBAL	F069	RGBAL	F069
	RGBAL	F070	RGBAL	F070
	RGBAL	F071	RGBAL	F071
	RGBAL	F072	RGBAL	F072
	RGBAL	F073	RGBAL	F073
	RGBAL	F074	RGBAL	F074
	RGBAL	F075	RGBAL	F075
	RGBAL	F076	RGBAL	F076
	RGBAL	F077	RGBAL	F077
	RGBAL	F078	RGBAL	F078
	RGBAL	F079	RGBAL	F079
	RGBAL	F080	RGBAL	F080
	RGBAL	F081	RGBAL	F081
	RGBAL	F082	RGBAL	F082
	RGBAL	F083	RGBAL	F083
	RGBAL	F084	RGBAL	F084
	RGBAL	F085	RGBAL	F085
	RGBAL	F086	RGBAL	F086
	RGBAL	F087	RGBAL	F087
	RGBAL	F088	RGBAL	F088
	RGBAL	F089	RGBAL	F089
	RGBAL	F090	RGBAL	F090
	RGBAL	F091	RGBAL	F091
	RGBAL	F092	RGBAL	F092
	RGBAL	F093	RGBAL	F093
	RGBAL	F094	RGBAL	F094
	RGBAL	F095	RGBAL	F095
	RGBAL	F096	RGBAL	F096
	RGBAL	F097	RGBAL	F097
	RGBAL	F098	RGBAL	F098
	RGBAL	F099	RGBAL	F099
	RGBAL	F100	RGBAL	F100
	RGBAL	F101	RGBAL	F101
	RGBAL	F102	RGBAL	F102
	RGBAL	F103	RGBAL	F103
	RGBAL	F104	RGBAL	F104
	RGBAL	F105	RGBAL	F105
	RGBAL	F106	RGBAL	F106
	RGBAL	F107	RGBAL	F107
	RGBAL	F108	RGBAL	F108
	RGBAL	F109	RGBAL	F109
	RGBAL	F110	RGBAL	F110
	RGBAL	F111	RGBAL	F111
	RGBAL	F112	RGBAL	F112
	RGBAL	F113	RGBAL	F113
	RGBAL	F114	RGBAL	F114
	RGBAL	F115	RGBAL	F115
	RGBAL	F116	RGBAL	F116
	RGBAL	F117	RGBAL	F117
	RGBAL	F118	RGBAL	F118
	RGBAL	F119	RGBAL	F119
	RGBAL	F120	RGBAL	F120
	RGBAL	F121	RGBAL	F121
	RGBAL	F122	RGBAL	F122
	RGBAL	F123	RGBAL	F123
	RGBAL	F124	RGBAL	F124
	RGBAL	F125	RGBAL	F125
	RGBAL	F126	RGBAL	F126
	RGBAL	F127	RGBAL	F127
	RGBAL	F128	RGBAL	F128
	RGBAL	F129	RGBAL	F129
	RGBAL	F130	RGBAL	F130
	RGBAL	F131	RGBAL	F131
	RGBAL	F132	RGBAL	F132
	RGBAL	F133	RGBAL	F133
	RGBAL	F134	RGBAL	F134
	RGBAL	F135	RGBAL	F135
	RGBAL	F136	RGBAL	F136
	RGBAL	F137	RGBAL	F137
	RGBAL	F138	RGBAL	F138
	RGBAL	F139	RGBAL	F139
	RGBAL	F140	RGBAL	F140
	RGBAL	F141	RGBAL	F141
	RGBAL	F142	RGBAL	F142
	RGBAL	F143	RGBAL	F143
	RGBAL	F144	RGBAL	F144
	RGBAL	F145	RGBAL	F145
	RGBAL	F146	RGBAL	F146
	RGBAL	F147	RGBAL	F147
	RGBAL	F148	RGBAL	F148
	RGBAL	F149	RGBAL	F149
	RGBAL	F150	RGBAL	F150
	RGBAL	F151	RGBAL	F151
	RGBAL	F152	RGBAL	F152
	RGBAL	F153	RGBAL	F153
	RGBAL	F154	RGBAL	F154
	RGBAL	F155	RGBAL	F155
	RGBAL	F156	RGBAL	F156
	RGBAL	F157	RGBAL	F157
	RGBAL	F158	RGBAL	F158
	RGBAL	F159	RGBAL	F159
	RGBAL	F160	RGBAL	F160

Example only

